

# Accessing and Navigating the Enrollment Dash board

---

A Business Intelligence Dash board  
For  
*SPC Executives*

**2012**

# BI – Student System – Purposes

- \* To provide selected SPC executives with access to daily and historical information about SPC students and enrollment.
- \* To enable each user to select data elements, locations, and performance periods.

# This presentation

- 1. Dashboard purposes**
- 2. Dashboard development**
- 3. Accessing the site**
- 4. Using the site**
- 5. Drilling-down**
- 6. Practice**

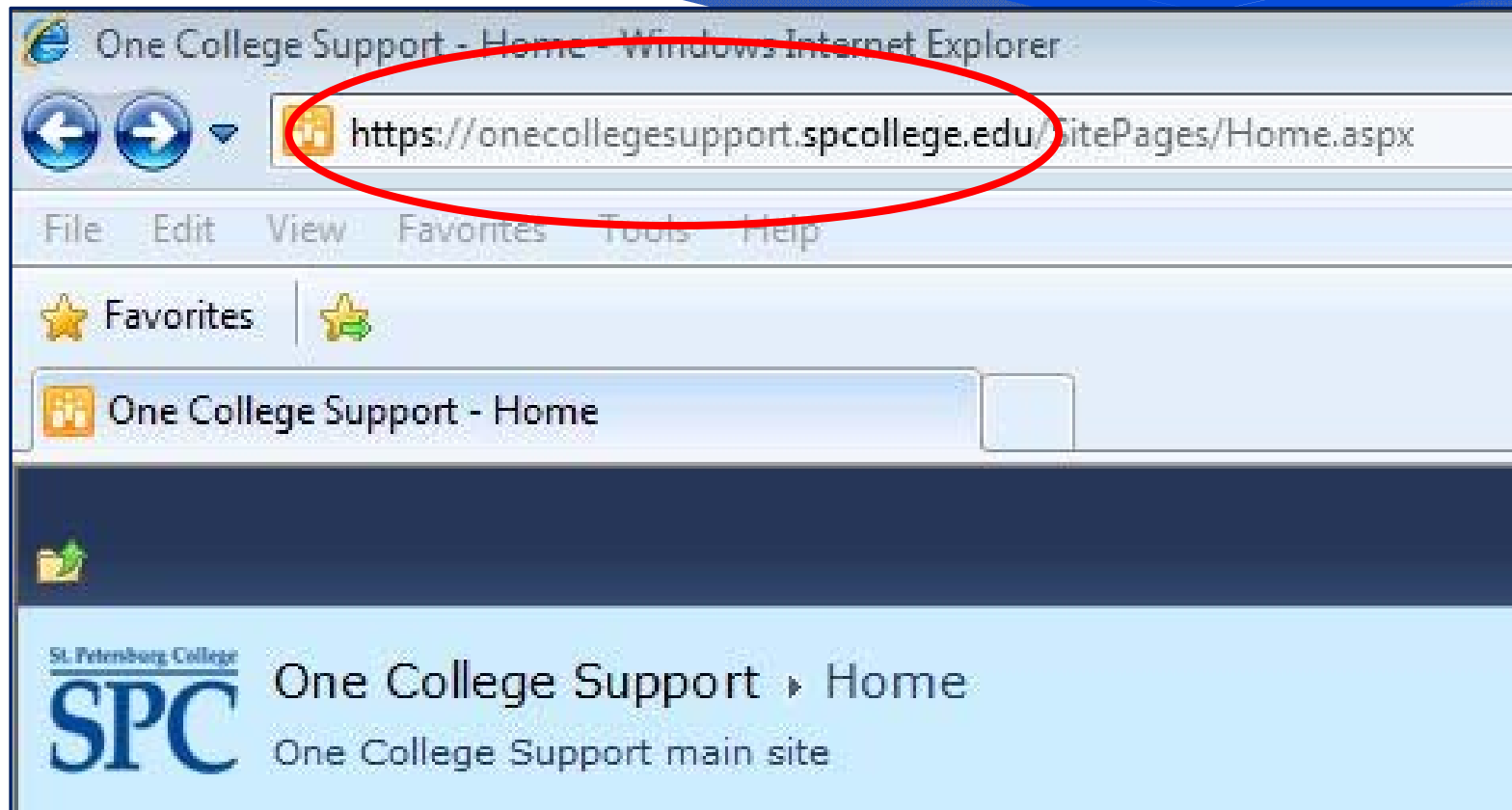
# Training objectives

- \* **Enter the BI site**
- \* **Select the appropriate display**
- \* **Select appropriate filters**
- \* **Export to EXCEL and POWERPOINT**
- \* **Determine enrollment by org**
- \* **Determine enrollment by plan**

# Your data requirements

- \* **What are your expectations for the BI enrollment dash board?**

# Locate the One College Support site (SharePoint)



# Navigate to Strategic Initiatives and select Business Intelligence

The screenshot shows the website's navigation bar with the following items: One College Support, College Administration, Committees & Groups, Executive Leadership, SPC Locations, Strategic Initiatives, The College Experience, and Training. The 'Strategic Initiatives' menu item is circled in red. A red arrow points from the top text to this menu item, and another red arrow points from the circle to the text 'Business Intelligence'.

St. Petersburg College  
SPC One College Support Home  
One College Support main site

All Sites

One College Support | College Administration | Committees & Groups | Executive Leadership | SPC Locations | **Strategic Initiatives** | The College Experience | Training

All Site Content | One College Support

Want to av

The bottom section of the page features four small images: a large building, a woman speaking into a microphone, a building with a 'FINE' sign, and a person looking at a data visualization.

**Business Intelligence**

# Select Provost and Dean Dashboard

St. Petersburg College  
**SPC** Business Intelligence

One College Support College Administration ▾ Committees & Groups ▾ Executive Leadership ▾ SPC Locations ▾ Strategic Initiatives ▾ The College Experience

Lists  
College, School, Department Configuration  
Dashboards  
Data Connections  
Libraries  
Site Pages  
PerformancePoint Content  
All Site Content

## Business Intelligence Center

The Business Intelligence Center enables you to collaborate, discover and manage the information you need to drive the business intelligence, users are empowered with the right business insights enabling them to make informed decisions, and move the business forward.

Out of clutter find simplicity! - Albert Einstein

### Student System Dashboards

- Provost and Dean Dashboard
- Enrollment Dashboard
- Student Retention Dashboard

**For more information contact Institutional Research and Reporting:**

**Dr. Dan Gardner, Coordinator**  
727 341-3095  
gardner.daniel@spcollege.edu

**Theresa Dimmer, Research Specialist**  
727 302-6851  
dimmer.theresa@spcollege.edu



# Select desired page display (19 options)



# 19 primary page displays

- \* **Enrollment Attributes**
- \* **Enrollment Status**
- \* **Degree Objective**
- \* **Enrollment Type**
- \* **Course Instructional Method**
- \* **Financial Aid**
- \* **Financial Aid Award**
- \* **Financial Aid Award vs. Non Awarded**
- \* **Student Demographics**
- \* **Student Race Ethnicity**
- \* **Student Age**
- \* **Student Gender**
- \* **Top Courses**
- \* **Enrollment by Zipcode**
- \* **Student Success Rates**
- \* **Student Success Counts**
- \* **Campus Cross Enrollment**
- \* **Campus Enrollment (First Time)**
- \* **Campus Cross Enrollment (First Time)**

# Provost and Dean Dashboard

## nine ENROLLMENT related pages

- \* **Enrollment Attributes**
- \* **Enrollment Status**
- \* **Degree Objective**
- \* **Enrollment Type**
- \* Course Instructional Method
- \* Financial Aid
- \* Financial Aid Award
- \* Financial Aid Award vs. Non Awarded
- \* Student Demographics
- \* Student Race Ethnicity
- \* Student Age
- \* Student Gender
- \* **Top Courses**
- \* **Enrollment by Zipcode**
- \* Student Success Rates
- \* Student Success Counts
- \* **Campus Cross Enrollment**
- \* **Campus Enrollment (First Time)**
- \* **Campus Cross Enrollment (First Time)**

# Provost and Dean Dashboard

## three FINANCIAL AID related pages

- \* Enrollment Attributes
- \* Enrollment Status
- \* Degree Objective
- \* Enrollment Type
- \* Course Instructional Method
- \* **Financial Aid**
- \* **Financial Aid Award**
- \* **Financial Aid Award vs. Non Awarded**
- \* Student Demographics
- \* Student Race Ethnicity
- \* Student Age
- \* Student Gender
- \* Top Courses
- \* Enrollment by Zipcode
- \* Student Success Rates
- \* Student Success Counts
- \* Campus Cross Enrollment
- \* Campus Enrollment (First Time)
- \* Campus Cross Enrollment (First Time)

# Provost and Dean Dashboard four DEMOGRAPHICS related pages

- \* Enrollment Attributes
- \* Enrollment Status
- \* Degree Objective
- \* Enrollment Type
- \* Course Instructional Method
- \* Financial Aid
- \* Financial Aid Award
- \* Financial Aid Award vs. Non Awarded
- \* **Student Demographics**
- \* **Student Race Ethnicity**
- \* **Student Age**
- \* **Student Gender**
- \* Top Courses
- \* Enrollment by Zipcode
- \* Student Success Rates
- \* Student Success Counts
- \* Campus Cross Enrollment
- \* Campus Enrollment (First Time)
- \* Campus Cross Enrollment (First Time)

# Provost and Dean Dashboard

## two STUDENT SUCCESS related pages

- \* Enrollment Attributes
- \* Enrollment Status
- \* Degree Objective
- \* Enrollment Type
- \* Course Instructional Method
- \* Financial Aid
- \* Financial Aid Award
- \* Financial Aid Award vs. Non Awarded
- \* Student Demographics
- \* Student Race Ethnicity
- \* Student Age
- \* Student Gender
- \* Top Courses
- \* Enrollment by Zipcode
- \* **Student Success Rates**
- \* **Student Success Counts**
- \* Campus Cross Enrollment
- \* Campus Enrollment (First Time)
- \* Campus Cross Enrollment (First Time)

# Provost and Dean Dashboard one INSTRUCTION related page

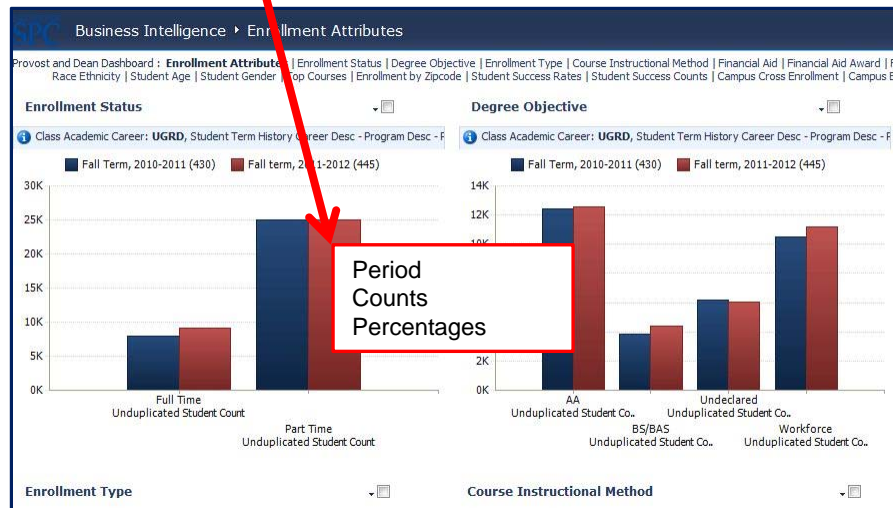
- \* Enrollment Attributes
- \* Enrollment Status
- \* Degree Objective
- \* Enrollment Type
- \* **Course Instructional Method**
- \* Financial Aid Award
- \* Financial Aid Award vs. Non Awarded
- \* Student Demographics
- \* Student Race Ethnicity
- \* Student Age
- \* Student Gender
- \* Top Courses
- \* Enrollment by Zipcode
- \* Student Success Rates
- \* Student Success Counts
- \* Campus Cross Enrollment
- \* Campus Enrollment (First Time)
- \* Campus Cross Enrollment (First Time)

# Note date of Student System Cube refresh





# Additional information Using “Hovers”



Additional information is displayed when the mouse “hovers” over a graphic bar.

“Hover” percentages reflect side-by-side comparisons.

# Select desired filter(s)



# Using Filters – Helpful Hint



- \* Filters are not refreshed when another report is selected.
- \* Filters are retained from one use to the next.
- \* Reset filters as new reports are developed.



Filters allow users to prepare specific requests

All filter selections are AND.

Different types of filter selections are available.

- \* A list where only one value can be selected, an example is **Campus Description**.
- \* A hierarchical list where only one value can be selected, e.g. **Career – Program – Plan – Subplan**.
- \* A hierarchical list where multiple items can be selected, e.g. **College – Group – Acad Org – Subject**.

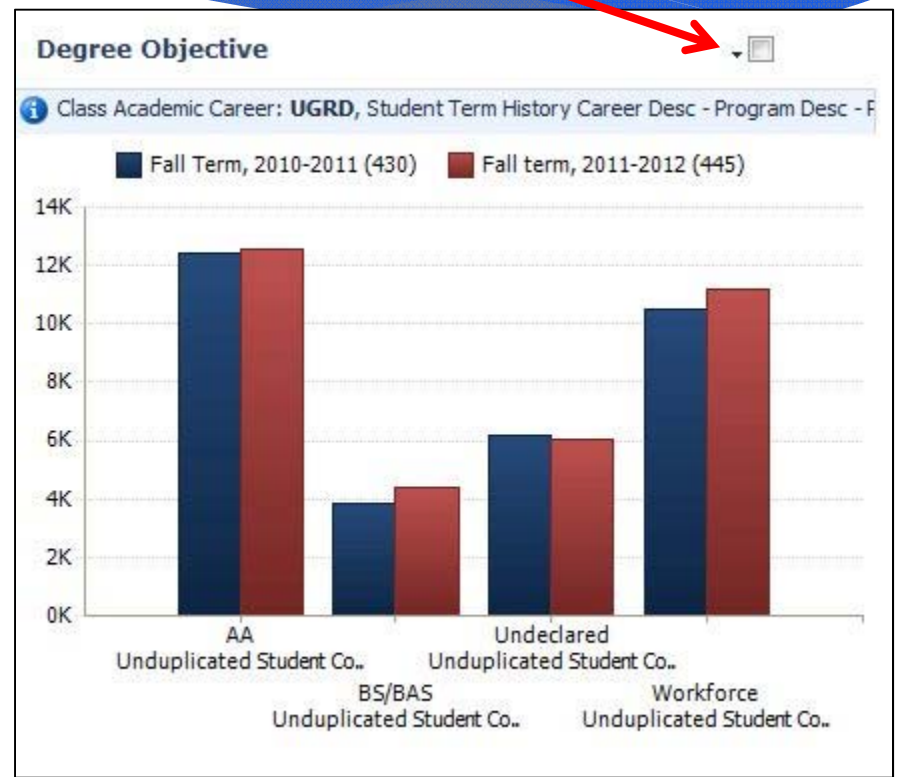
# Right click on graphic bar for additional details



**Drill-down to additional details by right clicking on graphic bar.**

# Export graphics

To export a graphic to PowerPoint or Excel, select the small down arrow.



# Selected Nuances

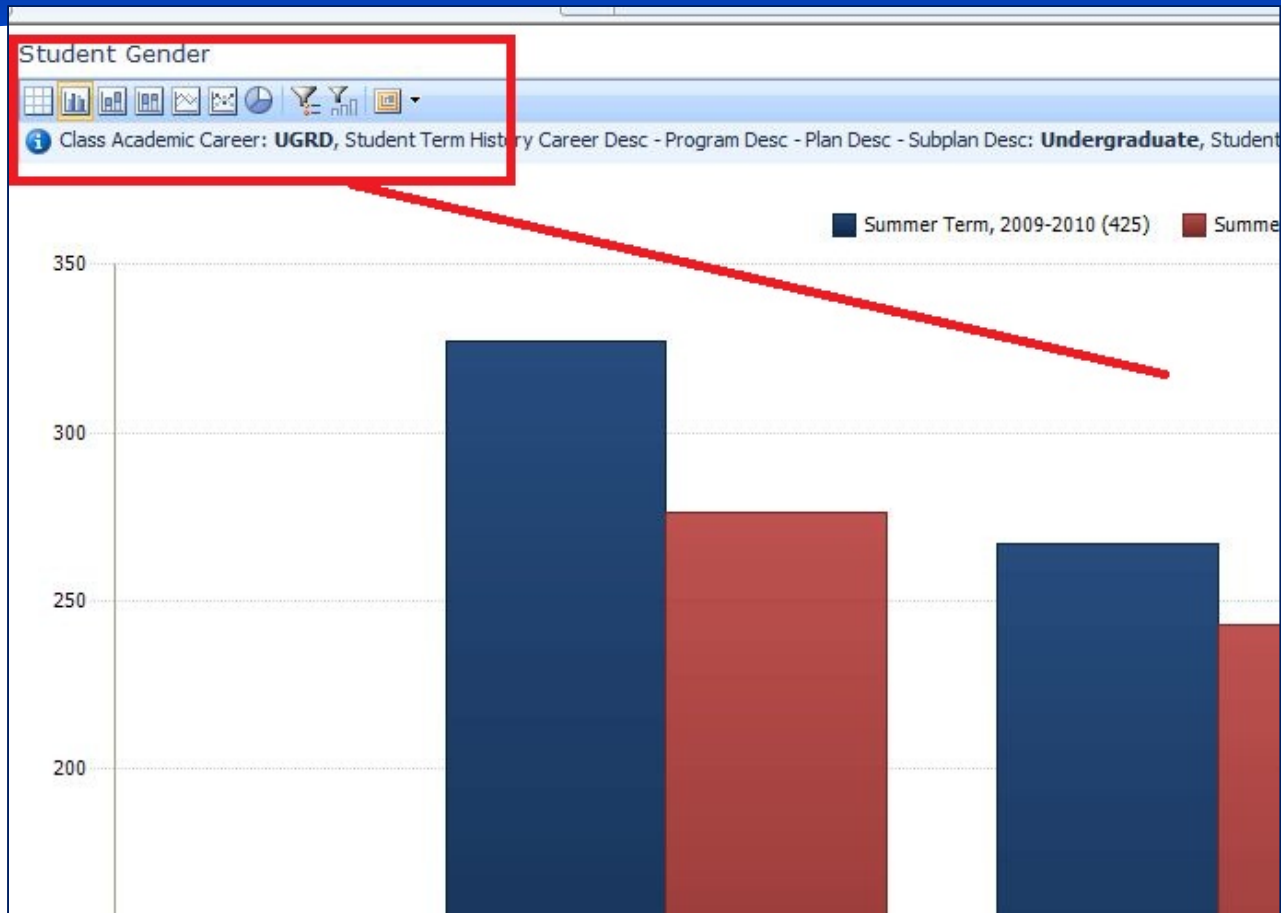
- \* **Always confirm filters.**
- \* **Filters are retained until de-selected.**
- \* **Term dates are “end of term” except for current and future terms.**
- \* **ALL selections prevail over subordinate selections on filter pick lists.**
- \* **E-campus reflects adjuncts only.**
- \* **More .....**

# Display options





# Display options, more



# Tabular display

Student Gender

Class Academic Career: **UGRD**, Student Term History Career Desc - Program Desc - Plan Desc - Subp

	Female	Male	Unknown
Term Academic Year - ...	Unduplicated...	Unduplicated...	Unduplicated...
Summer Term, 2009-20...	327	267	35
Summer Term, 2010-20...	276	243	9

# Questions

